

Installation instruction

STM/TEMP(FW) including 2 or 4 straps



1 Pull the casing end seal over the casing- and media pipe. The edge of the casing pipe must be chamfered.



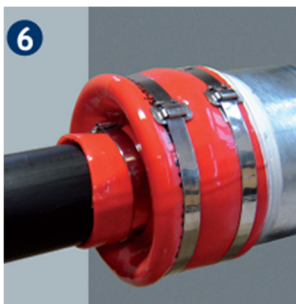
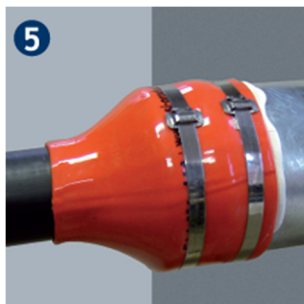
2 Install the first strap approx 15 mm in front of the end of the casing pipe.



3 Inject the adhesive (incl. the delivery) all the way around under the edge of the casing end seal on the casing pipe.

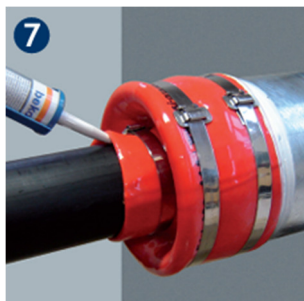


4 Then install the second strap. Spread eventually the rest of the adhesive.



5 **6** Align the casing end seal on the media pipe (image 5 - elongated; image 6 - S-shaped), depending on the direction of movement. Then install the first strap approx 15 mm from the rear end of the casing end seal.

<Ø350 the metal strap is 12 mm wide



7 Inject the adhesive (incl. the delivery) all the way around under the edge of the casing end seal on the media pipe, and install the second strap. Spread eventually the rest of the adhesive.



8 If the gap over the media pipe is larger than 70 mm, it is recommended to use support segments behind the casing end seal, so the Casing end Seal is not pushed too far into the casing pipe. Ask when ordering.

OBS!

Do you have issues shaping the Casing end Seal, it's possible to soften the Rottolin material in 55° hot water for 5 minutes, or by heating the Casing end Seal on both sides with a heater. Make sure that it doesn't get too hot. Doing these actions makes it easier to shape the Casing end Seal.